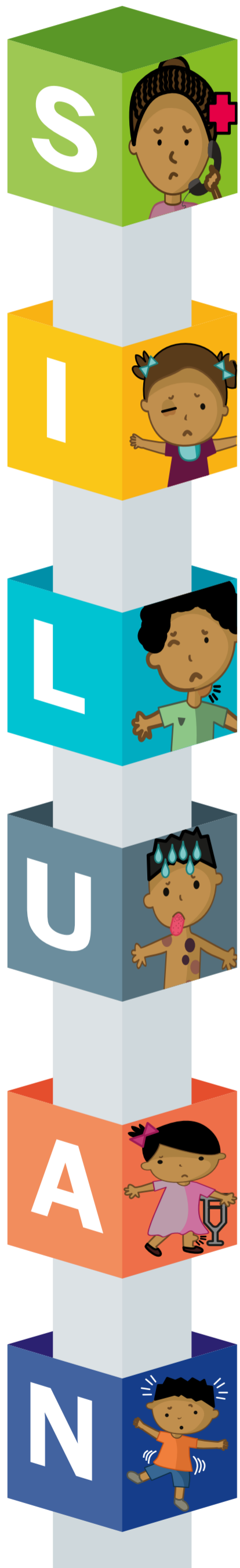


To improve the survival rate more children need to be diagnosed, at early stages, and treated by paediatric oncologists.

# EARLY WARNING SIGNS OF CHILDHOOD CANCER



## SEEK

**Seek** medical help for persistent symptoms.

Should you receive treatment and the symptoms don't go away, on completion of treatment you should seek help from the **same clinic/doctor**.

If symptoms go away after treatment but then **come back**, seek help.

## EYE

A **white spot** in the eye can be a cancer of the eye.

A **new squint** or **new blindness** can be a cancer of the brain.

A **bulging eye** can be a cancer of the eye that has been there for long, or it can be a cancer behind the eye.

Absent or abnormal **red reflex**, with or without a squint, requires immediate referral.

## LUMP

It can be in the **abdomen, pelvis, head, neck, limbs, testes and glands**.

**Every lump** must be referred.

A **TB lump should go away** after two weeks of treatment, if not, seek help.

**Cancerous lumps** are generally **hard** and they **grow**.

## UNEXPLAINED

Unexplained **fever** for more than 2 weeks.

Unexplained **loss of weight** and **appetite**.

Unexplained **paleness**.

Unexplained **tiredness**.

Unexplained **easy bruising or bleeding**.

## ACHING

**Aching bones, joints, back** and **easy fractures**.

A child should **never get backache**.

Aching bones, backache and easy fractures are usually associated with **leukaemia**.

Aching bones and joints indicate cancer of the bone, which usually affects children in adolescence.

## NEUROLOGICAL

**Regression** of milestones.

Change or deterioration in **walk** or **balance** or **speech**.

**Slurred speech**.

**Headache** for more than a week, with or **without vomiting**.

**Enlarging head**.

## TO GET HELP:

If you detect any of the early warning signs,  
SMS the name of the province to 34486 (SMS costs R2)

Call the CHOC Helpline **0800 333 555**  
(during office hours)



CHOC is registered in terms of the  
Income Tax Act of 1992 as  
a Public Benefit Organisation.  
PBO 930009261 NPO Reg 001-338NPO

086 111 3500  
headoffice@choc.org.za  
f CHOC Childhood Cancer Foundation SA  
@CHOChildhoodSA

www.choc.org.za

